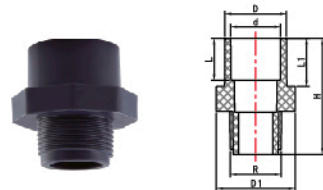


ITEM NO:US6018

● FEMALE ADAPTOR SPIGOT X FIPT

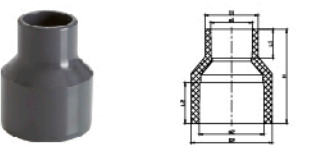
Nom Size	D	D1	d	L	H	Rc
20X1/2"	28.5	20	11.8	16.5	37.6	1/2"
20X3/4"	34	20	11.8	16.5	39.4	3/4"
25X1/2"	28.5	25	16.3	19.5	40.6	1/2"
25X3/4"	34	25	16.3	19.5	42.4	3/4"
25X1"	42.3	25	16.3	19.5	46.5	1"
32X3/4"	34	32	22	22.5	42	3/4"
32X1"	42.3	32	22	22.5	49.5	1"
40X1"	42.3	40	29	26.5	52	1"
40X1 1/4"	51.4	40	29	26.5	56	1 1/4"
40X1 1/2"	62.5	40	29	26.5	56	1 1/2"
50X1 1/4"	51.4	50	37.9	31.5	57.5	1 1/4"
50X1 1/2"	62.5	50	37.9	31.5	61	1 1/2"
50X2"	77.4	50	37.9	31.5	66	2"
63X1 1/2"	62.5	63	49	38.5	68	1 1/2"
63X2"	77.4	63	49	38.5	73	2"



ITEM NO:US6019

● MALE ADAPTOR M/F

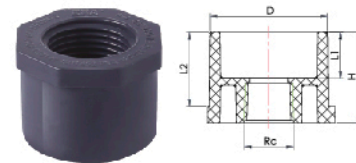
Size Nom	D	d	L	L1	H	Rc
25X20X1/2"	25	20	17	19.5	46	1/2"
20X25X3/4"	25	20.3	17	16.5	43.5	3/4"
25X32X1/2"	25.3	22	27	14	48	1/2"
25X32X3/4"	25.3	22	27	18.5	50	3/4"
25X32X1"	32	25.3	19.5	18	50	1"
32X40X1-1/4"	40	32.3	22.5	20.5	56.5	1 1/4"
32X40X3/4"	40	32.3	22.5	-	51	3/4"
40X32X1"	40	32	32.50	26.50	57	1"
50X40X1"	50	40	26.5	22	65.5	1"
40X50X1-1/2"	50	40.4	26.5	22	65.5	1 1/2"
50X40X1-1/4"	40.4	30	31.5	26.5	65.5	1 1/4"
63X50X2"	63	50	45	38	72	1 1/2"
63X50X1-1/2"	63	50	45	38	78	2"
75X63X2"	75	63	51.50	44	85	2"
75X90X3"	75	63.4	57.7	38.5	85	2 1/2"
75X63X2-1/2"	90	75.5	54	33	100	3"
90X75X2"	90	75	57	51.50	93.50	2"
110X90X3"	110	90	69.50	61.50	112.50	3"
110X125X3"	125	110.6	61.5	33	118	3"
125X110X4"	125	110.6	88.69	61.5	125	1"



ITEM NO:US6020

● REDUCING COUPLING M/F

Nom Size	D1	d1	L1	D2	d2	L2	H
63x50x32	41.3	32.3	22.5	62	50.4	31.5	73



ITEM NO:US6022

● FEMALE REDUCING RING

Nom Size	Rc	D	H	L1	L2
25X1/2"	1/2"	24.9	23.5	4.5	19.5
32X1/2"	1/2"	31.9	27.5	8.5	22.5
32X3/4"	3/4"	31.9	27.5	6.5	22.5
40X1"	1"	39.9	32.5	7.7	26.5
50X1/2"	1/2"	49.9	38.5	19.5	31.5
50X1 1/4"	1 1/2"	49.9	38.5	11.15	31.5
63X1 1/2"	1 1/2"	62.9	45.5	26.5	38.5

ITEM NO: US6023

● REDUCING RING MF

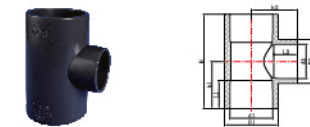
Size Nom	D	D1	D2	D3	H	L	L1	L2
3/4" X1/4"	30	1/4"	18.4	1/4"	16	12	26	30
1/2" X1/4"	24	1/4"	13.4	1/4"	14	12	24	24



ITEM NO:USM002

● MALE ADAPTOR III

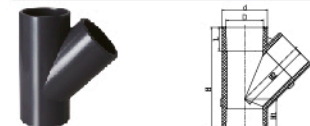
Size Nom	D	D1	d	L	H	Rc
20X1/2"	25	29.5	20	16	49	1/2"
25X3/4"	31.8	38.3	25	19.5	53	3/4"



ITEM NO:US6T02

● REDUCING TEE

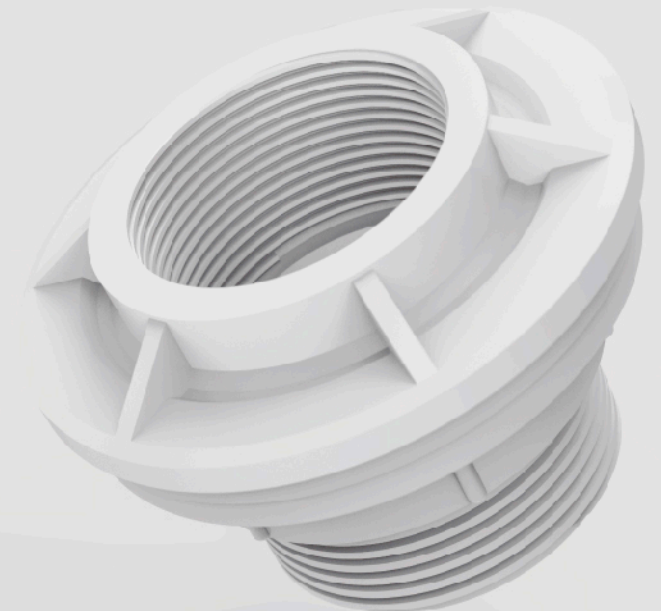
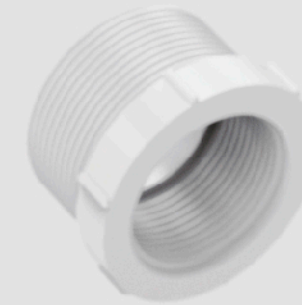
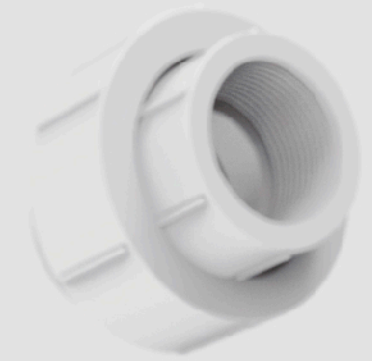
Nom Size	D1	d1	L1	h1	D2	d2	L2	h2	H
25x20	33	25	19.5	31	27	20	16.5	30.5	62
32x20	41.3	32	22.5	34	27	20	16.5	34	68
32x25	41.3	32	22.5	36.5	33	25	19.5	37	73
40x20	50.4	40	26.5	38	27	20	16.5	38	76
40x25	50.4	40	26.5	40.5	33	25	19.5	40.5	81
40x32	50.4	40	26.5	44.5	41.3	32	22.5	43.5	89
50x20	61	50	31.5	43.5	27	20	16.5	42.5	87
50x25	61	50	31.5	46	33	25	19.5	45.5	92
50x32	61	50	31.5	49.5	41.3	32	22.5	48.5	99
50x40	61	50	31.5	53.5	50.4	40	26.5	52.5	107
63x25	75.9	63	38.5	53.5	33	25	19.5	52	107
63x32	75.9	63	38.5	57	41.3	32	22.5	55	114
63x40	75.9	63	38.5	61	50.4	40	26.5	59	122
63x50	75.9	63	38.5	66	61	50	31.5	64	132
75x40	89.8	75	44.5	67	50.4	40	26.5	65	134
75x50	89.8	75	44.5	72	61	50	31.5	70	144
75x63	89.8	75	44.5	78.5	75.9	63	38.5	77	157
90x40	107.8	90	51.5	74	50.4	40	26.5	72.5	148
90x63	107.8	90	51.5	85.5	75.9	63	38.5	84.5	171
90x75	107.8	90	51.5	91.5	89.8	75	44.5	90.5	183
110x63	131	110	61.5	95.5	75.9	63	38.5	95	191
110x75	131	110	61.5	101.5	89.8	75	44.5	101	203
110x90	131	110	61.5	109	107.8	90	51.5	108	218
160x110	188	160	86.5	144	131	110	61.5	143	288



ITEM NO:US6T04

● SKEW TEE

Size Nom	d	D	L	H	H1	H2
50MM	50.4	61	31.5	142	45	97



PVC THREAD FITTINGS (BS STANDARD)

PRESSURE